

## Planetary Gear Case Study: Truck Drivetrain Component Supplier Eliminates Costly Secondary Operation

### Customer Profile:

A Virginia-based machining and fabrication shop dedicated to supplying the heavy trucking industry with planetary gear cases.

### The Challenge

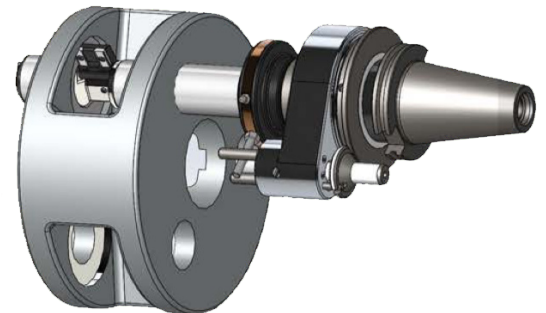
Speed the process of reverse machining of planetary gear cases while maintaining high tolerances through heavy interrupted cut.

### The Solution

A Torque Bar Activated Autofacer was used on a vertical CNC machining center at a rate of 275 SF/Min, .003 IPR. Ø3.638 spot face holding a  $\pm.002$  perpendicularity between front and back faces and through hole. Heavy interrupted cut.

### The Results

The Autofacer advantage eliminated a costly secondary broaching operation. The Autofacer machined the front and back faces in one operation without indexing the part, successfully maintaining spot face and perpendicularity tolerances through heavy interrupted cut.



**Eliminated entire broaching operation by utilizing Steiner Autofacer® to machine front and back spotfaces with heavy interruption in current setup.**

### Autofacer®

- Back spotfacing
- Hydraulic cylinder
- Lean process
- Cost reduction
- Quick delivery
- Engineered tooling
- Engineered solutions
- Improved cycle times



Toll Free: 888-327-1949  
Phone: 585-425-5910  
Fax: 585-425-5913

**Steiner Technologies, Inc.**  
180 Perinton Parkway  
Fairport, NY 14450

**REQUEST A QUOTE**